



MOVE INN ESTATES
MAKING THE RIGHT MOVE



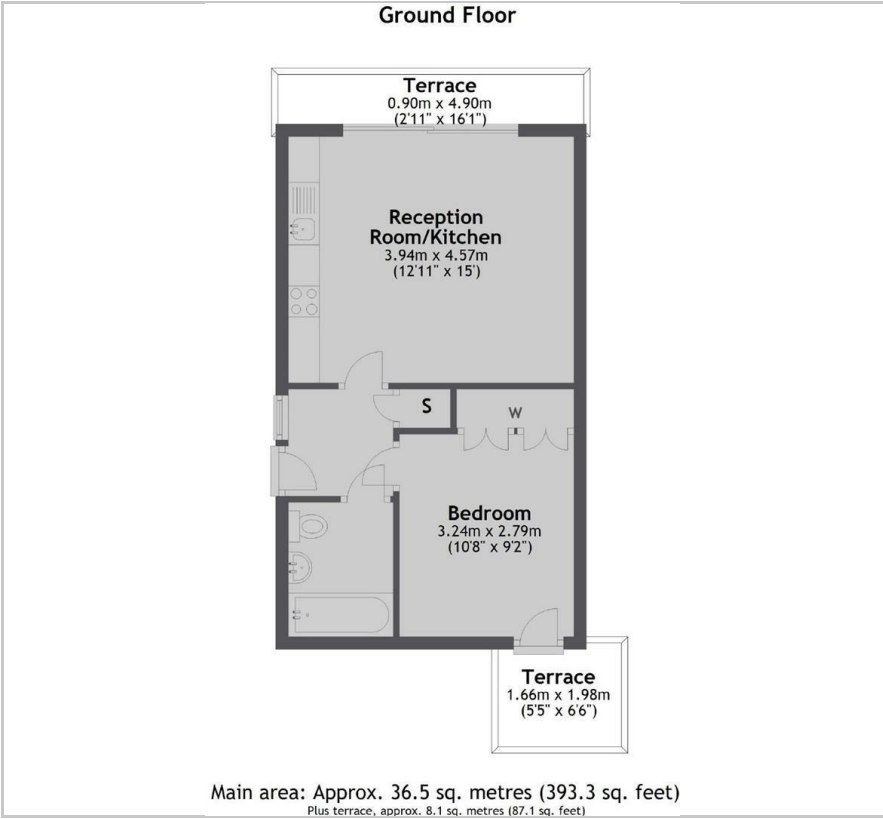
Bath Road

, Hounslow, TW4 7DE

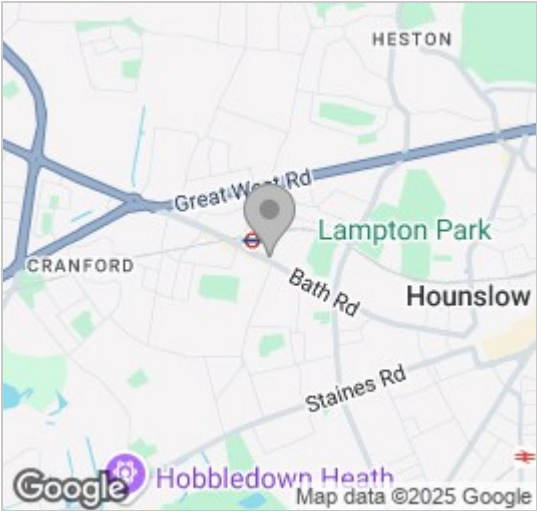
£1,500 Per Month



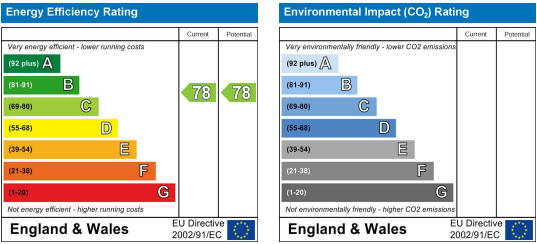
Floor Plan



Area Map



Energy Efficiency Graph



Viewing

Please contact our Move Inn Estates - Sales Office on 0208 574 4966 if you wish to arrange a viewing appointment for this property or require further information.

- Available from 1st March
- Private Parking
- Private Terrace
- Ground Floor
- Furnished
- Walking Distance To Station



Introducing a stylish and contemporary 1-bedroom ground floor flat nestled in the heart of Hounslow West. This modern new-build residence offers a perfect blend of comfort and convenience, presenting an ideal living space for discerning individuals or couples.

Situated in a prime location, this furnished flat boasts easy access to Hounslow High Street and Hounslow West Station, making commuting a breeze. With amenities, shops, and eateries just a stone's throw away, residents can enjoy the vibrant atmosphere of the area.

Featuring a thoughtfully designed interior, the flat offers ample living space, including a cozy bedroom, a contemporary bathroom, and a well-appointed kitchen. Additionally, the property includes the luxury of a dedicated parking space, ensuring convenience and peace of mind for residents with vehicles.

This property is perfect for working professional couples seeking a comfortable and modern living environment.

Don't miss out on the opportunity to make this your new home. Book a viewing today to avoid disappointment and secure your place in this desirable location.

These particulars, whilst believed to be accurate are set out as a general outline only for guidance and do not constitute any part of an offer or contract. Intending purchasers should not rely on them as statements of representation of fact, but must satisfy themselves by inspection or otherwise as to their accuracy. No person in this firm's employment has the authority to make or give any representation or warranty in respect of the property.